

Opportunities to benefit from the “New” disruptive and innovative economy

Three areas where I see the potential for greatest future growth:

- Cybersecurity
- Robotics
- Artificial Intelligence (AI)

Cybersecurity

Need has never been greater:

- More potential vulnerabilities in the electronic, connected world that is growing ever more ubiquitous
- More exploitations from anywhere in the globe by individuals, corporate, and governments
- Despite the impact, nowhere close to adequately addressing the challenge
- Cyber-warfare is not new, but it is becoming the weapon of choice likely for a long time to come

PureFunds ISE Cyber Security Index ETF: **HACK**

Top holdings: Imperva, Qualsys, Trend Micro, Check Point Software, Gigamon and FireEye, Symantec, Proofpoint

Expenses: 0.6%

Avg trading vol: 418K sh/day

First Trust Nasdaq CTA Cybersecurity Index ETF: **CIBR**

Top holdings: Palo Alto Networks, Akamai Technologies, Cisco, Check Point Software, Symantec, FireEye, Varonis, Imperva

Expenses: 0.6%

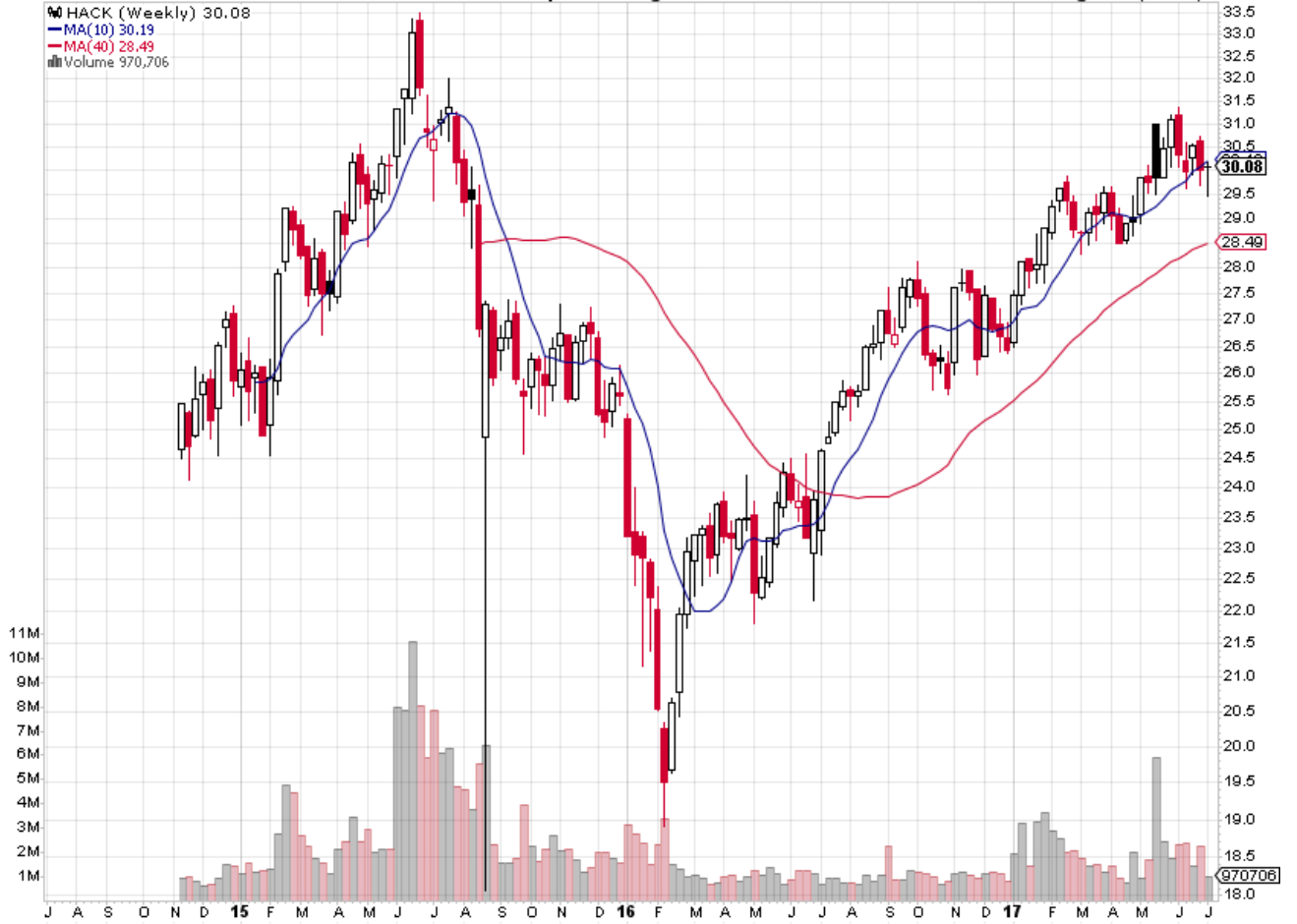
Avg trading vol: 94K sh/day

HACK PureFunds ISE Cyber Security ETF AMEX
7-Jul-2017

© StockCharts.com

Open 30.06 High 30.16 Low 29.47 Close 30.08 Volume 970.7K Chg +0.06 (+0.20%) ▲

HACK (Weekly) 30.08
MA(10) 30.19
MA(40) 28.49
Volume 970,706

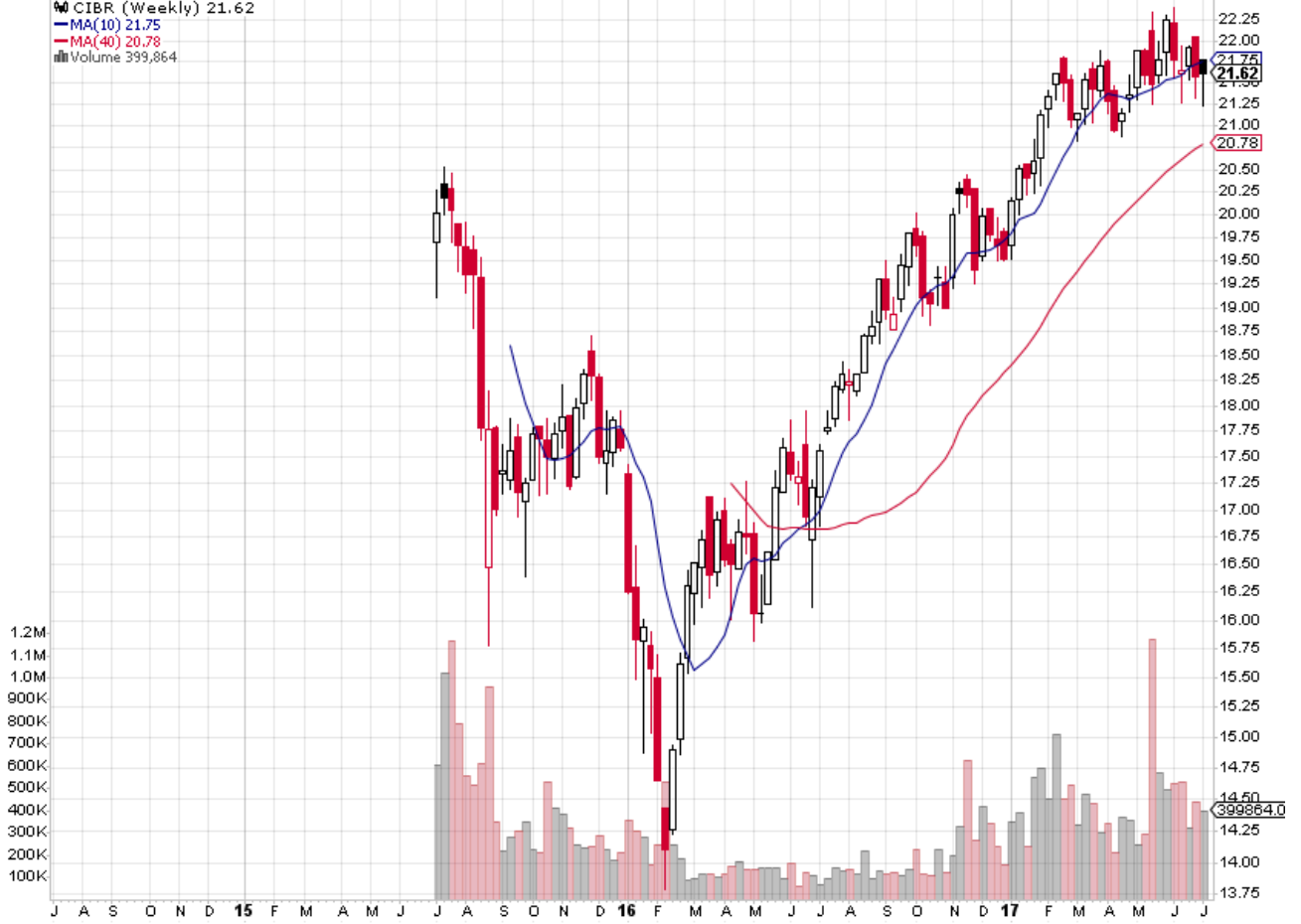


CIBR First Trust NASDAQ Cybersecurity ETF Nasdaq GS
7-Jul-2017

© StockCharts.com

Open 21.77 High 21.77 Low 21.24 Close 21.62 Volume 399.9K Chg +0.05 (+0.23%) ▲

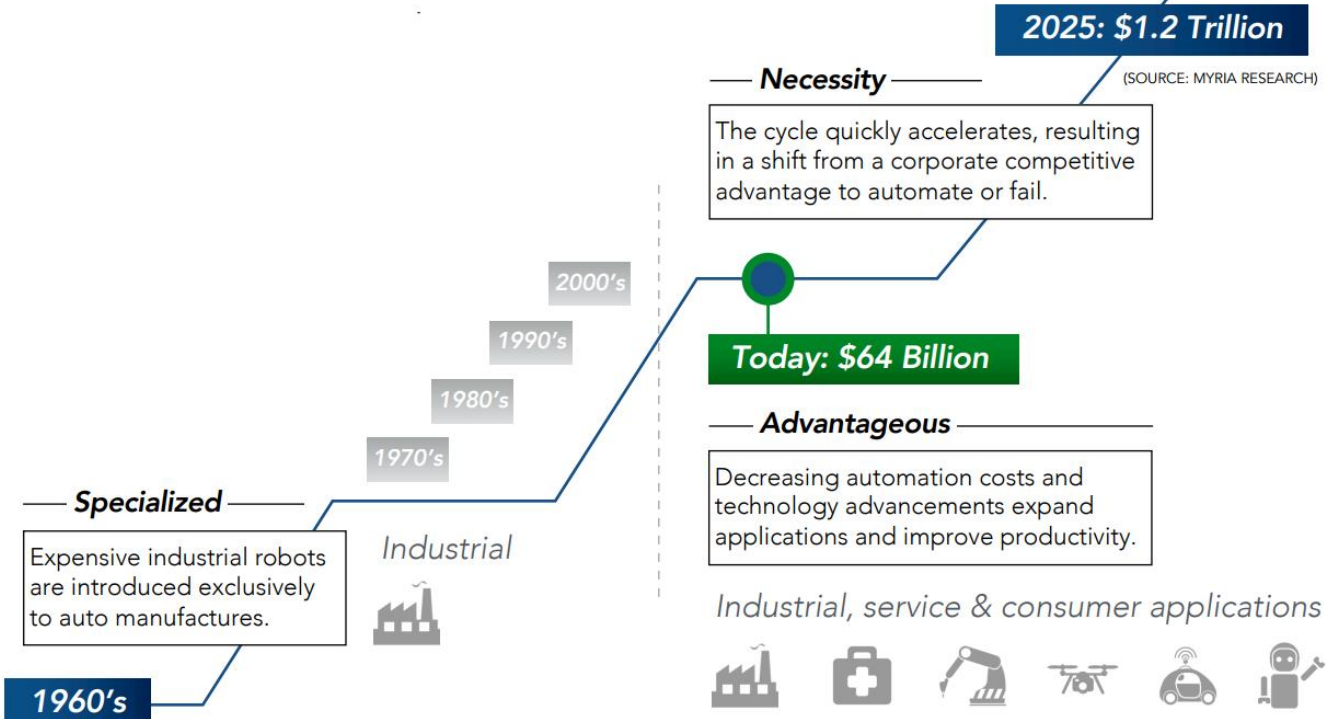
📊 CIBR (Weekly) 21.62
— MA(10) 21.75
— MA(40) 20.78
📊 Volume 399,864



ROBOTICS

ROBOTICS GROWTH CURVE

THE PAST, PRESENT AND FUTURE OF ROBOTICS ECONOMY



Robo Global Robotics and Automation ETF: **ROBO** (roboglobal.com)

Top holdings iRobot, Aerovironment, Daifuku, Intuitive Surgical, Keyence

Expense ratio: .95% - does business on various world exchanges

Avg Trading vol: 270K sh/day

DEFINING THE UNIVERSE OF ROBOTICS



The index has 83 members:

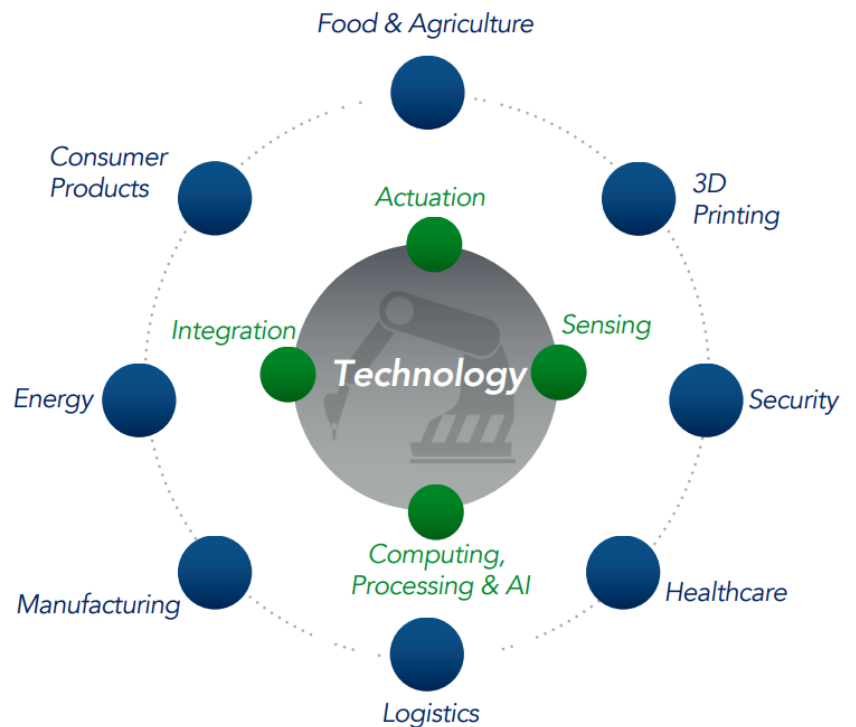
- TECHNOLOGY: 40 Holdings
- APPLICATIONS: 43 Holdings

Technology

Companies with products and services that enable robots to "think, sense and act".

Applications

Companies that deploy robotic and automation technology into a product, service or manufacturing process to increase efficiency and productivity.



ROBO ROBO Global Robotics and Automation Index ETF Nasdaq GM

© StockCharts.com

7-Jul-2017

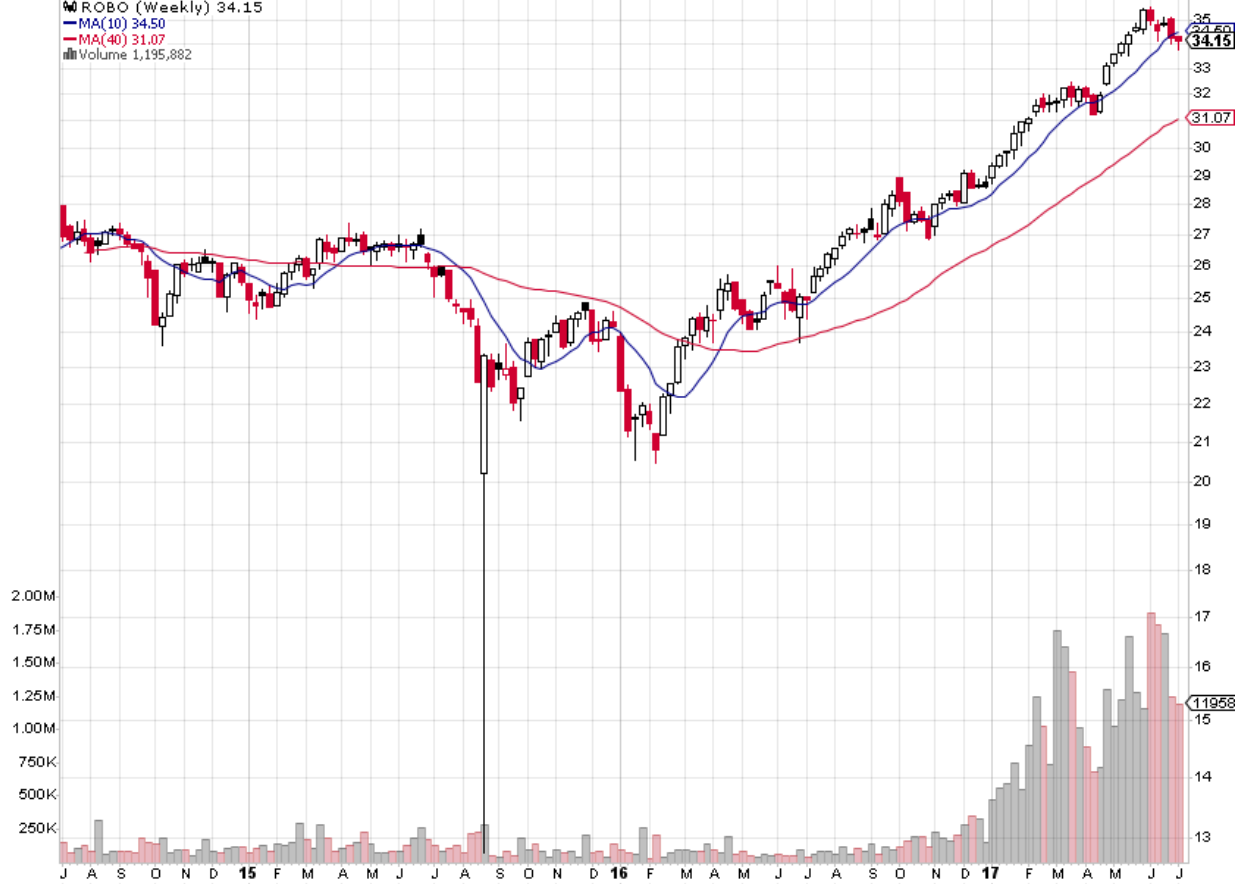
Open 34.34 High 34.35 Low 33.79 Close 34.15 Volume 1.2M Chg -0.13 (-0.38%)

ROBO (Weekly) 34.15

MA(10) 34.50

MA(40) 31.07

Volume 1,195,882



Artificial Intelligence

Advancements in autonomous vehicles, robotics, 3D printing, and energy storage technology are enhancing productivity, reducing costs, and transforming the manufacturing landscape.

By 2035, investments in automation and robotics will generate over \$12 Trillion in additional GDP according to a 2013 University of Oxford study

ARK Industrial Innovation ETF: **ARKQ**

Actively managed fund focused on companies applying AI to the real world to develop, produce, or enable:

- 3D Printing (33%)
- Robotics (27%)
- Autonomous Vehicles (26%)
- Energy Storage (9%)
- Development of Infrastructure (3%)
- Space Exploration (2%)
- Alternate Energy Sources (0.3%)
- Innovative Materials (0.1%)

Top Holdings: Tesla, Stratasys, Nvidia, Proto Labs, Amazon, Materialise NV, Baidu, Alphabet (40% allocation to top 5)

Expense ratio: 0.75%

Avg Trading vol: 43K sh/day

ARKQ ARK Industrial Innovation ETF AMEX

© StockCharts.com

7-Jul-2017

Open 28.19 High 28.28 Low 27.57 Close 27.96 Volume 77.2K Chg -0.16 (-0.57%) ▼

ARKQ (Weekly) 27.96
MA(10) 28.43
MA(40) 24.38
Volume 77,207

